



**M-LIGHTS**  
SOFT GLOW LED

# COMPANY PROFILE

**SINELAB TECHNOLOGIES PVT. LTD.**



# INDEX

KNOW US

SEGMENTS OF DEVELOPMENT

TIMELINE

VISION & MISSION

OUR PRODUCTS

FEATURES & KEY PERSONNEL







## KNOW US

The electrical and electronics market of India is one of the largest and the finest in the world. **Sinelab Technologies** is an Indian electronic design and manufacturing company that came into existence as an establishment in the year 2003. It is an initiative of Technology Incubation Centre at NIT Campus, Calicut, Kerala as a result of which highly experienced and knowledgeable persons came forward to become a part of this initiative. This in turn has brought out immense results due to the precision and detailing in the technical segments. **Sinelab Technologies** carries in it 5 years of intense experience in electronics hardware for specific applications using embedded technologies.

2013 was a year of victory and achievement for **Sinelab Technologies**. It incorporated a company in the name, **Sinelab Technologies Pvt.Ltd**. The company embarked its expansion and diversification in 2013 and made the outset in the joint venture with AP Group of Companies & SARK Cables Pvt. Ltd, thus launching **LUMASUN** brand products from the new manufacturing unit at NIDA, Kanjikode, Palakkad, Kerala. Since then the company has contribute towards sustainable energy products. **LUMASUN** has now reformed to **M-LIGHTS**, maintaining the exact quality measures and expertise.

The design, development, assembling and integration is taken care of in detail and with precision by the expert team and it is made convenient by the wide infrastructure. The Research & Development unit works to develop more efficient products at competitive prices. There is a set focus on pertaining high quality and most efficient products to all the customers and ensure user-friendly products with customer satisfaction. The experts dedicate their valuable time to help the customers any time.

### COMPANY CERTIFICATION AND EMPANELMENT

#### COMPANY CERTIFICATION



B-CLASS  
ELECTRICAL  
LICENSE

SPD

#### COMPANY EMPANELMENT

- ▶ Empaneled with Kerala State Industrial Enterprises
- ▶ Empaneled with Kerala Small Industries Development Corporation Ltd
- ▶ Empaneled with Steel Industries Kerala Ltd
- ▶ Empaneled with United Electrical Industries Ltd
- ▶ Empaneled with Kerala State Electronics Development Corporation Ltd







## SEGMENTS OF DEVELOPMENT

Creation and innovation is what leads a company. **Sinelab Technologies** had inherited the genes of development and innovation from the initial stages. The entire development was segmented and thus the below mentioned are the various segments in which the product development had taken shape:



Solar Power Plants



LED Lighting Solutions



LED Display and Signages



Lab Equipments







# TIMELINE LIGHT



Lumasun Solar Solutions  
M-Lights LED products

2017

2013

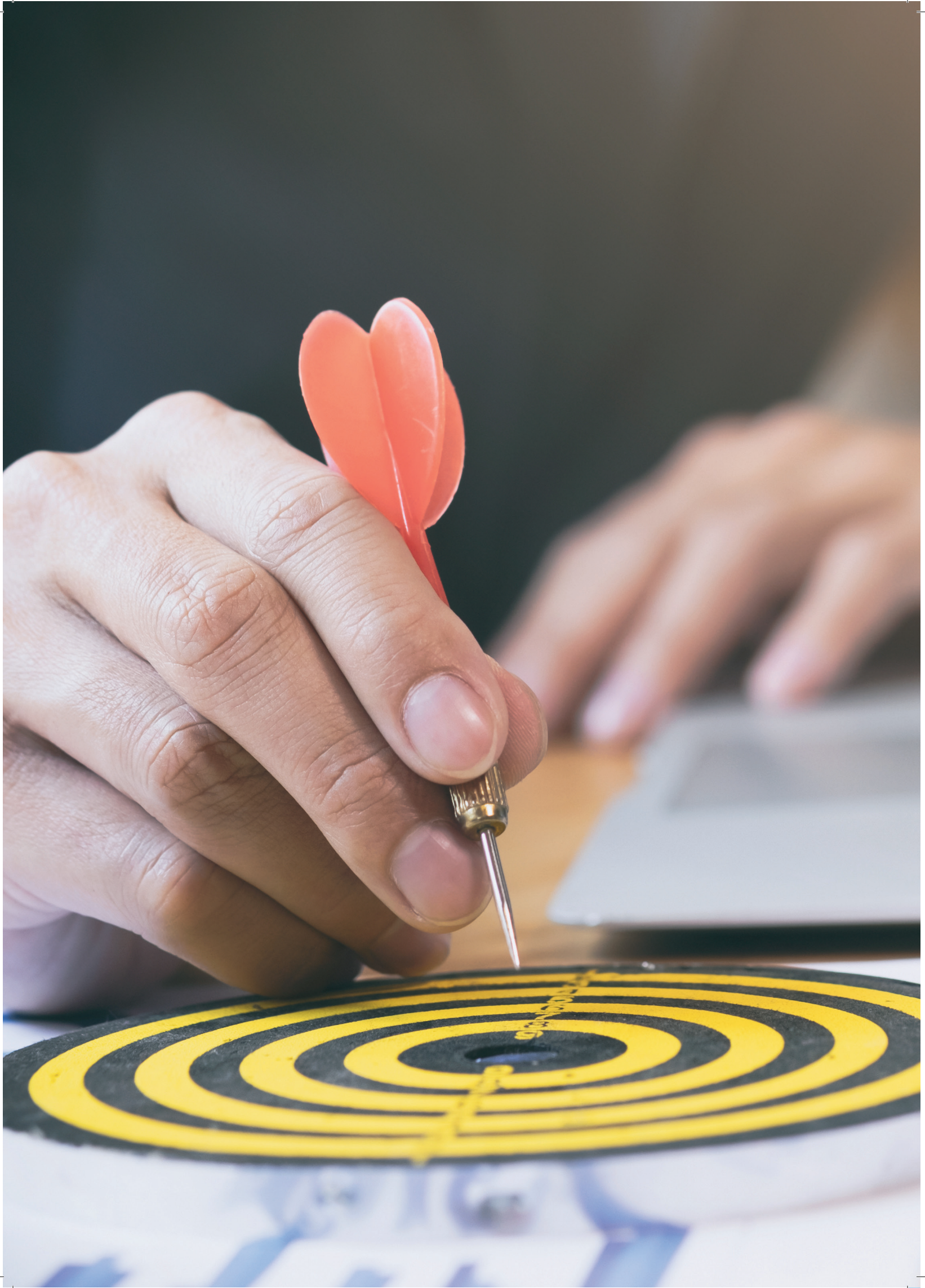
The brand, Lumasun is  
launched as a part  
of expansion and diversification

Sinelab Technologies Pvt. Ltd.  
takes shape

2013

2003

Established as  
Sinelab Technologies  
as an initiative of  
Technology Incubation  
Centre at NIT Campus, Calicut





## VISION

To provide beneficial and innovative products to customers on time at competitive prices that represents the highest value-for-money in the industry

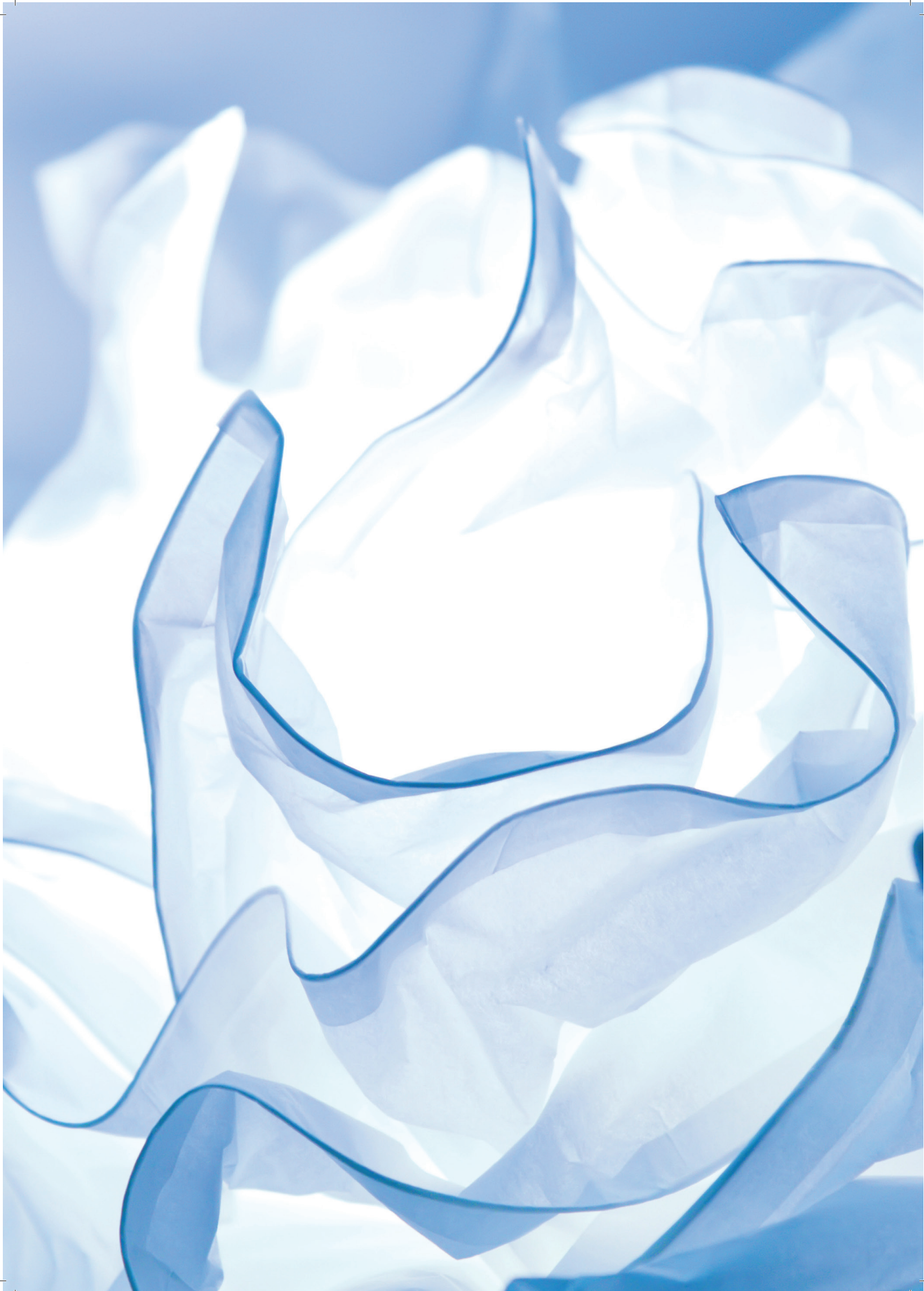
## MISSION

To provide the customers high quality products at competitive rates with value-added services as well as product expertise. The mission is to offer innovative ways to solve complex issues and provide sustainable, cost-effective energy-efficient applications.

## PROJECTS

### Turn key Projects

- ▶ High Mast & Mini Mast LED Lighting Projects
- ▶ Solar Power Plants and Street Light Projects
- ▶ Hi-Tech Schools & Smart Classes
- ▶ CCTV City & Street Surveillance Projects
- ▶ Smart Labs
- ▶ Illumination & Dam Beautification Projects
- ▶ LED Retrofitting Projects



## OUR PRODUCTS

The range of products in the brand ranges from LEDs to Solar powered ones, thus ensuring a wide array of options to choose from. Keeping in my mind the customer requirements and demands, the products are created taking into consideration the quality and durability. The range of products include:

### M-LIGHTS INDOOR PRODUCTS

- ▶ LED
- ▶ LED BULB & TUBE
- ▶ LED DISPLAY
- ▶ LED PANEL LIGHTS
- ▶ LED DOWN LIGHTS
- ▶ LED WALL WASHER
- ▶ LED SURFACE MOUNT LIGHTS
- ▶ LED CONTROLLERS
- ▶ LED STREET LIGHT
- ▶ LED DRIVERS
- ▶ LED MODULES

### M-LIGHTS INDOOR PRODUCTS

- ▶ STREET LIGHTS
- ▶ FLOOD LIGHTS
- ▶ BAY LIGHTS
- ▶ WELL GLASS LIGHTS

### LUMASUN SOLAR SOLUTIONS

- ▶ SOLAR POWER PLANTS
- ▶ SOLAR STREET LIGHT
- ▶ SOLAR PV MODULES
- ▶ SOLAR CHARGING CONTROLLERS
- ▶ SOLAR LANTERN
- ▶ SOLAR LAMPS
- ▶ SOLAR INVERTER

### OTHER PRODUCTS

- ▶ SMART CLASS EQUIPMENTS
- ▶ POWER SUPPLY
- ▶ DISPLAY CONTROLLERS
- ▶ LCD DISPLAY
- ▶ STRIP LIGHTS
- ▶ INVERTER & UPS
- ▶ LAB EQUIPMENTS
- ▶ CRYSTAL PANEL LIGHT
- ▶ LCD PANELS









## FEATURES & KEY PERSONNEL

### PRODUCT FEATURES

- ▶ High quality
- ▶ Reasonable pricing
- ▶ Long lasting
- ▶ Best for Indian consumers
- ▶ As per the technical specification given by the customers

### COMPANY FEATURES

- ▶ Formed of experts and high-end technical masters.
- ▶ Low production cost
- ▶ Low transportation cost as compared to the marketing prices offered by the Northern industries in Southern marketing
- ▶ Experienced and technically knowledgeable promoters
- ▶ Good client-base
- ▶ Raised level of job opportunities

### KEY PERSONNEL

If you would like to receive supplementary information and details, please do not hesitate to contact us:

**K.SAJEEV KUMAR .K**  
Managing Director  
Mob: 094470 38312

**NIYAS.A**  
Director (Technical)  
Mob: 098953 30805

**SUNIL JOSEPH**  
Director (Marketing)  
Mob: 094477 53312



## **SINELAB TECHNOLOGIES PVT. LTD.**

### **MARKETING:**

20/460, 1ST Floor, Palmplaza Complex,  
Kalmandapam, Palakkad – 1.  
Ph: 099462 07737

### **WORKS:**

SINELAB TECHNOLOGIES PVT.LTD.  
Door No: XIV/968 & 969, Kalarickal Building,  
N.H.Bye Pass, Chandranagar,  
Palakkad – 678007,Kerala.  
Ph: 0491 – 2507276 Mob: 99462 07738  
E-mail : [sinelabpkd@gmail.com](mailto:sinelabpkd@gmail.com)  
[www.sinelabtechnologies.com](http://www.sinelabtechnologies.com)